

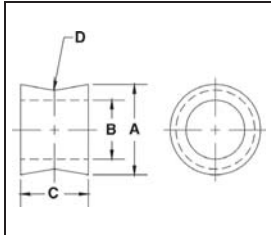
Sling Saver Shackle Accessories

Sling Saver®

S-255 SPOOL



S-256 LINK PLATE

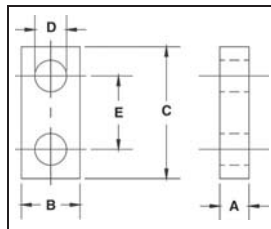


S-255 Spool

- The "Spool" is designed to keep the load centered on the pin, thus keeping the sling positioned correctly in the shackle bow.

Working Load Limit (t)*	S-255 Stock No.	Weight Each (kg)	Dimensions (mm)			
			A	B	C	D
3-1/4	1020903	0.15	31.8	20.6	19.1	4.85
6-1/2	1020912	0.26	38.1	23.9	25.4	6.35
8-3/4	1020921	0.40	44.5	26.7	30.2	7.85
12-1/2	1020930	0.66	51.0	33.3	38.1	9.65
20-1/2	1020939	1.27	63.5	41.4	47.8	11.2
35	1020948	1.09	82.5	54.0	57.0	12.7
50	1020957	1.84	95.5	60.5	70.0	15.7

* Maximum Proof Load is 2.5 times the Working Load Limit. Minimum Ultimate Strength is 5 times the Working Load Limit.



S-256 Link Plate

- The "Link Plate" is designed to connect two(2) S-252 or S-253 "Sling Saver" Shackles together.

Working Load Limit (t)*	S-256 Stock No.	Weight Each (kg)	Dimensions (mm)				
			A	B	C	D	E
3-1/4	1020785	0.38	19.1	38.1	86.0	20.6	47.8
6-1/2	1020796	0.73	25.4	44.5	105	23.9	57.0
8-3/4	1020807	1.23	31.8	51.0	121	26.9	66.5
12-1/2	1020818	2.35	38.1	63.5	152	33.3	85.6
20-1/2	1020829	3.71	44.5	76.0	178	41.1	95.5
35	1020840	7.80	51.0	102	235	54.0	127
50	1020851	17.0	76.0	127	267	60.5	146

* Maximum Proof Load is 2.5 times the Working Load Limit. Minimum Ultimate Strength is 5 times the Working Load Limit.